

Bianchi





Time and time again cyclists the world over comment on the special qualities of Bianchi bicycles. The quickness of acceleration. The responsiveness in climbing. The stability when descending.

How has Bianchi been able to maintain leadership in design, competition and performance over 100 years?

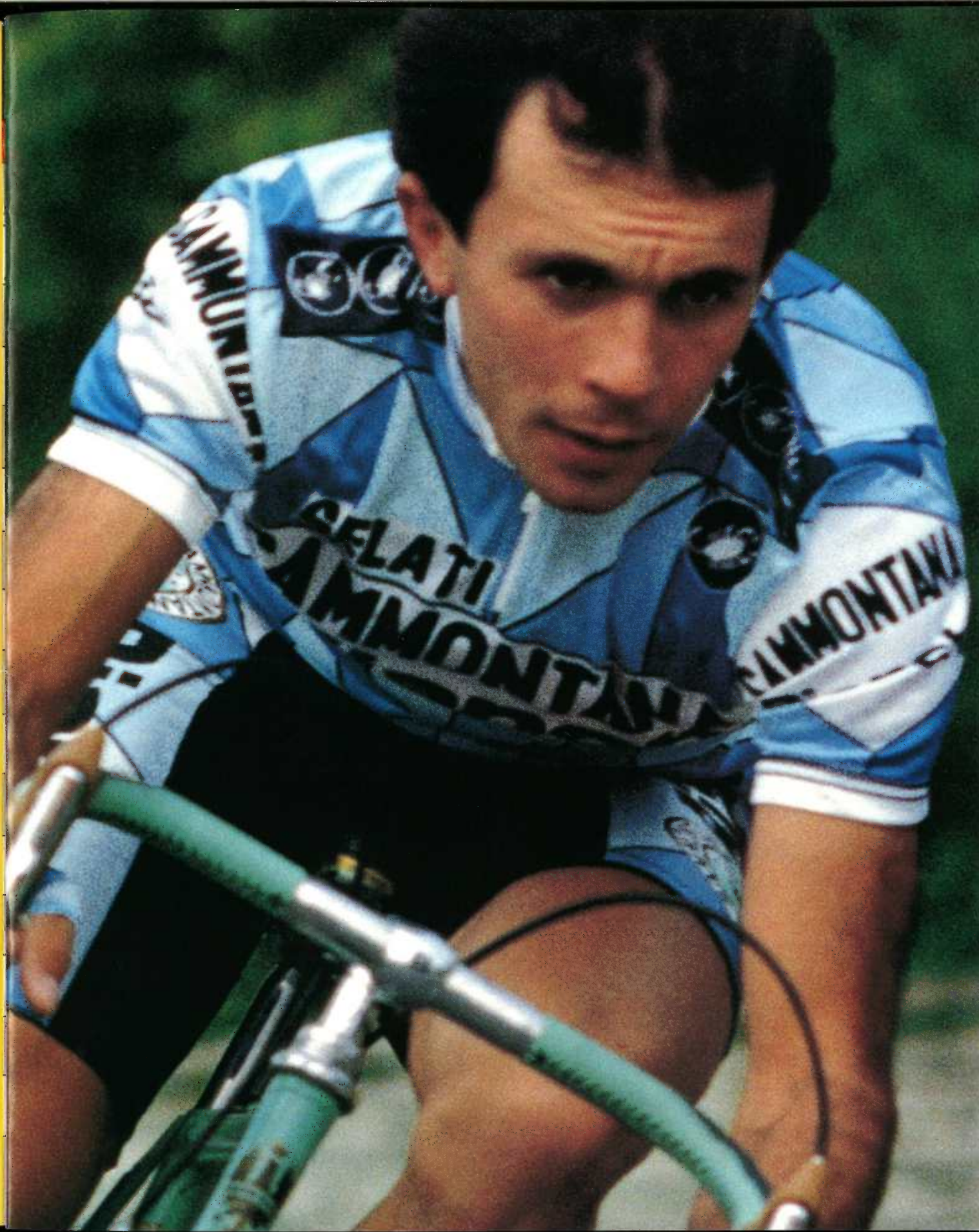
We think it comes down to two simple components.

First, our involvement in World Class Competition gives us a winning edge (such as our victory in the 1986 World Cycling Championships) and in order to maintain that edge, we must constantly define and redefine what the ultimate Bianchi product is. What we learn from these experiences, we integrate into our bicycles. Competition proved advances in our bicycles set us apart from other manufacturers.

Secondly, our resource is the Northern Italian bicycle artisan. This kind of experience and dedication to the craft can be found nowhere else. Their intrinsic understanding of the bicycle and access to the ultimate proving ground makes them the ultimate innovators. Changing only what needs to be changed in order to improve. Day in and day out individuals like Pietro Fanzaga and Osvaldo Bettoni make Bianchi bicycles for you as well as riders like Moreno Argentin.

The relationship of the Artisan, the Professional cyclist and you is the reason Bianchi has made the best bicycles in the world for the last century—and will continue to make them that way in the next.

y
g
e.
t



Professional Series

Bianchi Black and Silver Pro rims with Vittoria CG tubular tires the X-4 is accented with expensive Bianchi Pantographing.



X-4

Team issue SLX/SPX frameset featuring full Campagnolo C Record Group with Bianchi special anodization. Handlebars are hand stitched in Celeste Almarc leather.

Selle Italia Super Turbo Saddle. Mavic GL 330 rims with the new Vittoria Pro L slic.



Mondiale

The Mondiale introduces Bianchi's new metallic Celeste with a full complement of Celeste accessories. Campagnolo C Record "Pro" group, Pantographed 3T AR84 stem.



Wheels include Mavic MA-40 rims and Michelin select tires. Tape, saddle, cable housing and toe straps are in matching Celeste.

Giro

A full Columbus SL/SP frameset equipped with Shimano seven speed Dura-ace group featuring Aero brake levers and indexed shifting.



Crankset is Pista style Super Competizione with anodized chainring. The Pista bars sport our new Celeste handlebar tape.

Pista

Full Columbus frameset featuring investment cast fork crown and PS fork blades. The GPM fork ends are chrome plated for additional protection.

Competition Series

Super Leggera

Campagnolo C Record Derailleur, new GPM America 87 crankset. Ambrosio Super Elite hard anodized rims and Michelin select tires.



Full Columbus SL/SP frame-set with investment cast fork crown. Modolo's new hard anodized "Flyer" handlebar and stem group and matching Flyer brakeset.

Trofeo

Modolo's new gray anodized Flyer brakeset. Ambrosio Super Elite hard anodized rims and GPM Cronosprint hubset.

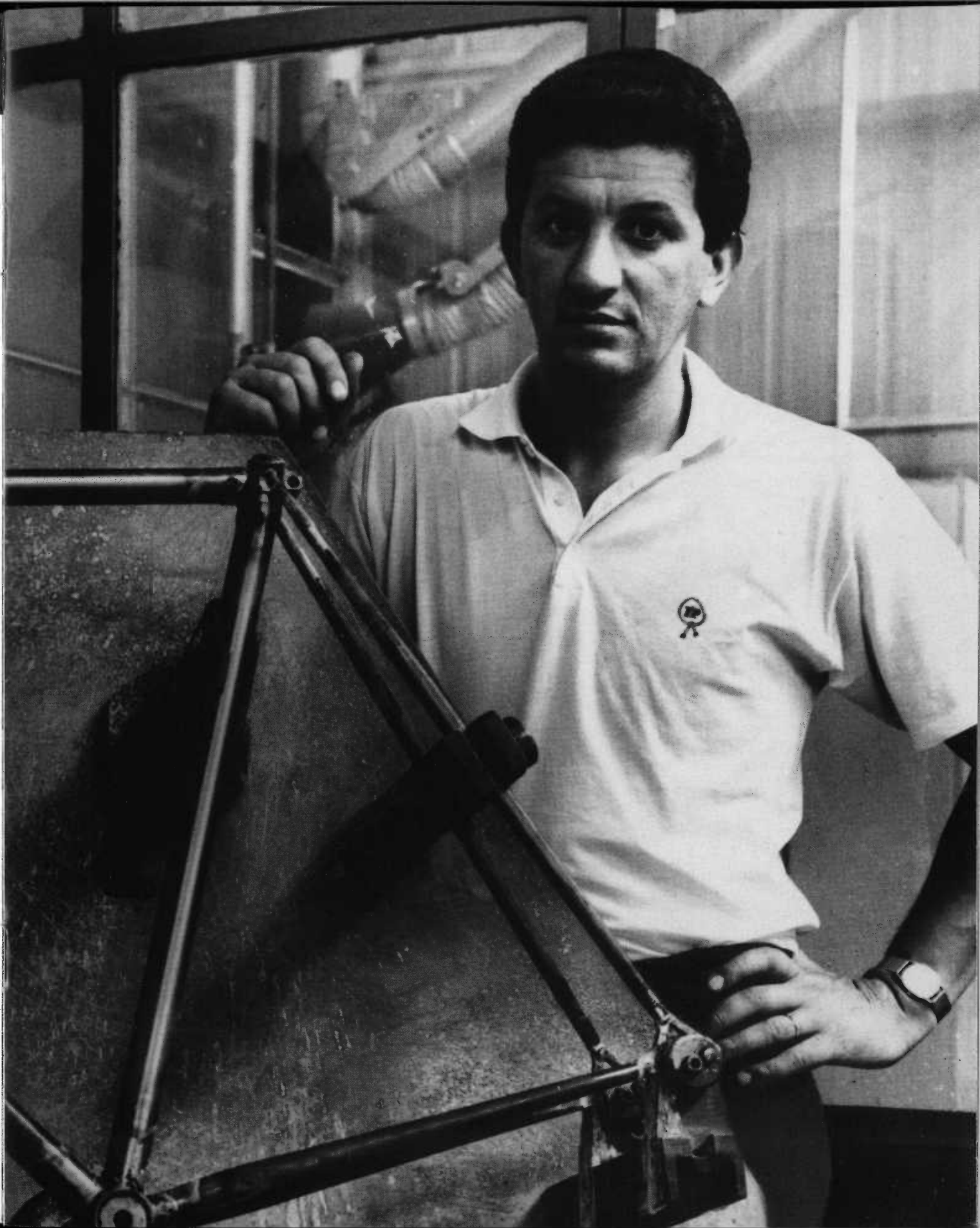


Laser etched anodized handlebar and stem combination. Super Record Derailleur Group. Omega Super Competizione crankset with anodized chainring and new Master pedals.

gera

ne-
ork
d
bar
th-

a
nk-
ng



Performance Series

Nuovo Alloro

Wheels utilize Ambrosio Super Elite rims with Michelin Select tires. Saddle is Selle Italia Nuovo Mundialita.



Campagnolo Victory Group. Handlebar and stem is anodized and Laser etched. Frameset is Bianchi Columbus Formula II in SuperSet construction and Cinelli investment cast fork crown.

Limited

Frame accents include Bianchi engraved seat stay caps and engraved fork crown. The Limited is also available in Metallic Celeste.



Bianchi/Columbus formula II frameset in SuperSet construction and Cinelli investment cast fork crown. Shimano's 600 S.I.S. Aero group with Laser etched handlebar.

oro

em
chi
nd

The full Columbus frameset sports our SuperSet construction. The handlebar is accented by laser etching of both Bianchi Eagle and Logo.



Squadra

Shimano 600 EX S.I.S. derailleur group is complemented by the Ofmega master crankset and its anodized chainrings. The Universal Squadra brakeset is equipped with Aero levers.

la
vn.

Ukai's hard anodized rims are fitted with IRC's new triathlon tire. The saddle is Selle Italia's popular Mundialita.



Brava

This model introduces Shimano's new 105 component group with indexed shifting and light action braking system. Bio-pace chain wheels complete this sleek new look.

Sport Series

The Ofmega Nuovo Competizione crankset is equipped with anodized chainrings. The wheels consist of Ambrosio Elite anodized rims and Ofmega Mundial hubs.



Campione d'Italia

The full Columbus frameset. In SuperSet construction, is equipped with the new anodized Modolo Start brake-set. The Derailleurs are Suntour's new Accushift system, Alpha 7000.

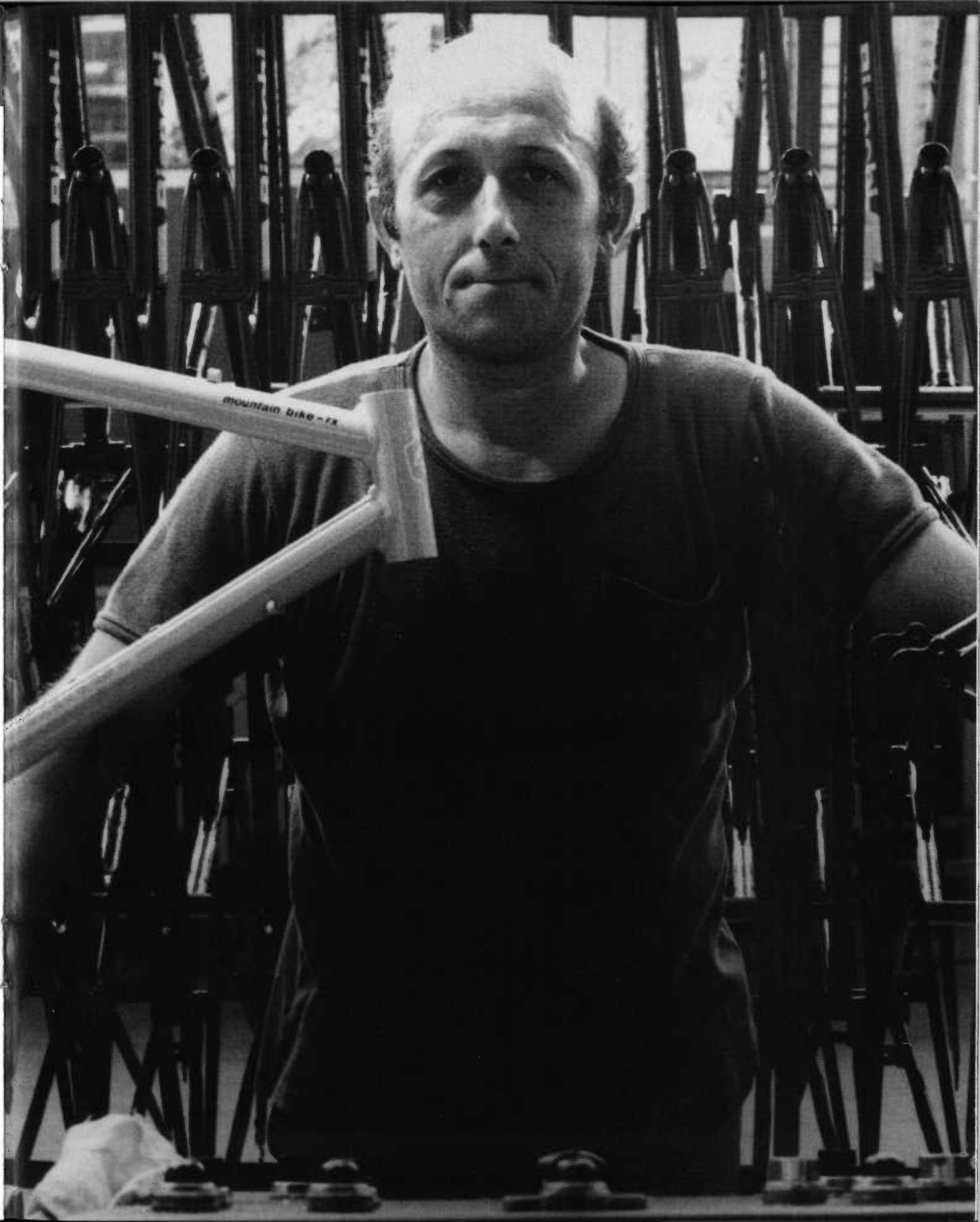
This model is also available in a 17.5" frame size with a 24 inch front wheel and 160mm crankset.



Sport SX

Suntour's new Accushift system Alpha 5000 component group equips our Tange Cro-moly Super Set frame. Anodized components include Araya 20A rims and the Sugino Alpha 5000 chainrings.

set.
y
ake-



o-
nge
e.
clude
rings.

Sport Series

Premio

Highlighted by light action brakes from Dia-Compe with Aero levers. Shimano S.I.S. Derailleur system and Super Turbo style saddle.



Bianchi engraved seat stay caps and forkcrown are highlights on the Premio's Cro-moly frameset. The racing geometry is complemented by forged Bianchi fork ends.

Strada LX

Extras on this model include a Bianchi engraved fork crown, Black gum rubber hoods, and an anatomic saddle.



Alloy rims with front and rear quick release, Shimano S.I.S. 12 speed derailleur system and downtube shifters are mounted on the LX frame which features Cro-moly tubing.

Strada

The front quick release wheel, Alloy pedals, One piece Sugino crankset, and foam handlebar grips are some of the value added features of this model.

A Cro-moly main frame and an engraved forkcrown highlight our entry level Bianchi.



Volpe

Bar-con controls, Tange Cro-moly, unicrown fork, Suntour Cyclone-7000, Triple crankset, full braze-ons, Shimano Deore cantilever are the unique features of this model.

A unique and carefully considered design equally adaptable for off-road riding, lightweight or even fully loaded touring.



Specifications

MODEL	SIZE AND COLOR	FRAME DETAILS	FORK AND HEADSET	BRAKESET	HANDLEBAR AND STEM
X4	51, 53, 55, 57, 59, 61cm Celeste	Columbus SLX/SPX throughout, Bianchi investment cast B.B. and lugs, front derailleur braze-on, Bianchi engraving, 2 bottle mounts, pump peg, chromeplated Campagnolo forkends, chromeplated right and left chainstays	Columbus SL with investment cast chromed engraved fork crown, Campagnolo C Record	Campagnolo Super Record, C Record pantographed levers aero kit	3T Competizione Aero, 3T AR84 pantographed
MONDIALE	49, 51, 53, 55, 57, 59, 61cm Metallic Celeste	Columbus SL/SP throughout, investment cast seat lug, front derailleur braze-on, Bianchi engraving, 2 bottle mounts, pump peg, chromeplated Gipiemme forkends and right chainstay	Columbus SL with investment cast engraved fork crown, Campagnolo C Record	Campagnolo Super Record, C Record levers aero kit	3T Competizione, 3T AR84 pantographed
GIRO	49, 51, 53, 55, 57, 59, 61cm Celeste	Columbus SL/SP throughout, investment cast seat lug, front derailleur braze-on, Bianchi engraving, 2 bottle mounts, pump peg, chromeplated Gipiemme forkends and right chainstay	Columbus SL with investment cast fork crown, Shimano Dura-Ace	Shimano Dura-Ace aero levers	3T Competizione, 3T AR84 pantographed
PISTA	50, 53, 56, 59cm Celeste	Bianchi Special by Columbus in Pista design, chromeplated Gipiemme Pista forkends, Bianchi engraved seat stays	Columbus PS with investment cast crown, Omega Gran Premio	N/A	ITM Mondial Pista, ITM 200
SUPER LEGGERA	49, 51, 53, 55, 57, 59, 61cm Celeste Yellow	Columbus SL/SP throughout, investment cast seat lug, front derailleur braze-on, Bianchi engraving, dual bottle mounts, pump peg, chromeplated Gipiemme forkends	Columbus SL with investment cast fork crown, Gipiemme Cronosprint	Modolo Flyer anodized, aero kit	Modolo Flyer, Modolo Flyer, anodized
TROFEO	50, 53, 56, 59, 63cm Celeste Turquoise	Bianchi Special Formula II by Columbus in SuperSet design, dual bottle mounts, pump peg, Gipiemme forkends, Bianchi engraved seat stays	Bianchi Special Formula II with investment cast engraved fork crown, Gipiemme Cronosprint	Modolo Flyer anodized, aero kit	ITM Mondial, laser etched ITM 300 Anthracite
NUOVO ALLORO	50, 53, 56, 59, 63cm Celeste Pearlescent White	Bianchi Special Formula II by Columbus in SuperSet design, dual bottle mounts, pump peg, Gipiemme forkends, Bianchi engraved seat stays	Bianchi Special Formula II with investment cast engraved fork crown, Gipiemme Cronosprint	Campagnolo New Victory	ITM Mondial laser etched, ITM 400
LIMITED	47, 50, 53, 56, 59, 63cm Metallic Celeste Black	Bianchi Special Formula II by Columbus in SuperSet design, dual bottle mounts, pump peg, Gipiemme forkends, Bianchi engraved seat stays	Bianchi Special Formula II with investment cast engraved fork crown, Shimano N600	Shimano N600 aero levers	ITM Mondial laser etched, ITM 200
SQUADRA	50, 53, 56, 59, 63cm Celeste	Bianchi Special Formula II Tretubi by Columbus in SuperSet design, Columbus Aelle taper gauge stays, dual bottle mounts, pump peg, Gipiemme forkends	Columbus Aelle with recessed bolt crown, Omega Master	Universal Squadra aero levers	ITM Mondial laser etched, ITM 200
BRAVA	50, 53, 56, 59, 63cm Black Turquoise	Tange double-butted Chrome-moly in SuperSet design for Bianchi, Tange taper gauge Mangalloy stays, dual bottle mounts, pump peg, Bianchi micro-adjust fork ends	Chrome-moly with recessed bolt crown, Shimano N105	Shimano N105 aero levers	SR CTD, SR Custom
CAMPIONE D'ITALIA	50, 53, 56, 59, 63cm Celeste Pearlescent White	Bianchi Special Formula II Tretubi by Columbus in SuperSet design, Columbus Aelle taper gauge stays, dual bottle mounts, pump peg, Gipiemme forkends	Columbus Aelle with recessed bolt crown, Omega Master	Mondolo Start anodized aero kit	ITM Mondial laser etched, ITM 100 black
SPORT SX	19, 21, 23, 25" 17.5" w/24" Ft. Wheel** Black New Rose	Tange double-butted Chrome-moly in SuperSet design for Bianchi, Tange taper gauge Mangalloy chainstays, dual bottle mounts, pump peg, Bianchi micro-adjust fork ends	Chrome-moly with recessed bolt crown, Nikyo	Alpha-5000 Balance Response System with aero levers	SR CTD, SR Custom
PREMIO	19, 21, 23, 25" Turquoise Red	Tange double-butted Chrome-moly in SuperSet design for Bianchi, oval/round racing stays, dual bottle mounts, forged fork ends, top tube guides	Chrome-moly, TH-305	Dia Compe QS500N Balance Response System with aero levers	HL racing bend, KL alloy
STRADA LX	19, 21, 23, 25" 19" Mixte Black Heather	Chrome-moly main frame, braze-on bottle mounts, top tube guides, cable guides, shift levers, cable guides	Chrome-moly, TH-305	Polygon AF-500 with QR and hooded levers	HL racing bend, KL alloy
STRADA	19, 21, 23, 25" 19" Mixte Red Mediterranean Blue	Chrome-moly main frame, braze-on bottle mounts, top tube guides, cable guides, fully lugged, allen seat post binder bolt	Hi-tension, TH-305	Chang Star 500 w/extension brake levers, lever hoods and QR	HL racing bend, KL alloy
VOLPE	53, 56, 59cm Turquoise	Tange double-butted chrome-moly in SuperSet design for Bianchi including chainstays. Dual bottle mounts, pump peg, Bianchi micro-adjust forkends, sealed mechanism B.B., cable guides, carrying strap braze-ons, rack mounts	Chrome-moly uncrown, MTB sealed	Shimano AT-50 cantilever with anatomic levers	SR CTD, SR Custom

Specifications are subject to change without notice. Bianchi limited warranty: Frames are guaranteed for a lifetime to the original owner. Other components are guaranteed for a full 12 months.
**Differences include Vetta women's saddle, Tecnova Tires, short toe clip, and 160mm crankarms

CRANKSET	PEDALS	DERAILLEURS AND SHIFT LEVERS	SADDLE AND SEATPOST	HUBSET AND SPOKES	FREEWHEEL AND CHAIN	TIRES AND RIMS	MISCELLANEOUS	WEIGHT (Approx.)
Campagnolo C Record pantographed anodized chainrings 53/42T	Campagnolo C Record	Campagnolo C Record	Selle Italia Super Turbo, Campagnolo Super Record	Campagnolo C Record, Alpina Inox	Regina CX silver 13-23T, CX silver	Vittoria CG, Bianchi Speciale	Campagnolo C Record toe clips, straps, waterbottle, pump, stitched leather bar wrap	21 lbs.
Campagnolo C Record 53/42T	Campagnolo C Record	Campagnolo C Record	Selle Italia Turbo, Gipiemme Cronosprint anodized	Campagnolo C Record, Alpina Inox	Regina BX silver 13-23T Synchro, Corsa silver	Vittoria Pro L Slic Mavic GL330	Campagnolo C Record toe clips, straps, Bike Ribbon	21 lbs.
Shimano Dura-Ace 53/42T	Shimano Dura-Ace	Shimano Dura-Ace SIS-7	Selle Italia Turbo Gipiemme Cronosprint anodized	Shimano Dura-Ace Alpina Inox	Shimano Dura-Ace 13-23T 7 Sedisport silver	Michelin Competition Slic 700 x 20C, Mavic MA40	Shimano Dura-Ace toe clips, toe straps, bike ribbon	21.5 lbs.
Omega Super Competizione Pista 48T	Omega Pista	N/A	Selle Italia Mundialita, ITM 201	Omega Competizione Pista, Alpina Inox	Campagnolo 16T fixed gear, Regina Pista	Vittoria Giro del Mondo, Ambrosio Montreal	Ale toe clips, toe straps, bike ribbon	18.5 lbs.
Gipiemme America 87 52/42T anodized chainrings	Omega Nuovo Master Aero	Campagnolo C Record/B Victory ft. derailleur	Selle Italia Special Mundialita, Gipiemme Cronosprint anodized	Gipiemme Sprint, Alpina Inox	Regina BX silver 13-23T Synchro, Corsa silver	Michelin Select 700 x 20C, Ambrosio Super Elite anodized	Ale toe clips, toe straps, bike ribbon	22 lbs.
Omega Super Competizione 52/42T anodized chainrings	Omega Master	Campagnolo Super Record/B	Selle Italia Special Mundialita, 3T RSR	Gipiemme Sprint, Alpina Inox	Regina BX silver 13-23T Synchro, Corsa silver	Michelin Select 700 x 20C, Ambrosio Super Elite anodized	Ale toe clips, toe straps, bike ribbon	22 lbs.
Campagnolo Victory 52/42T	Campagnolo Victory	Campagnolo New Victory, C Record levers	Selle Italia Special Mundialita, ITM 201	Campagnolo New Victory, Alpina Inox	Regina BX silver 13-23T Synchro, Corsa silver	Michelin Select 700 x 20C, Ambrosio Super Elite anodized	Ale toe clips, toe straps, bike ribbon	22 lbs.
Shimano N600 52/42T	Shimano N600	Shimano N600 SIS	Selle Italia Special Mundialita, 3T RSR	Shimano N600, Alpina Inox	Shimano N600 silver 14-24T Shimano silver	Michelin Select 700 x 20C, Ambrosio Super Elite anodized	Shimano toe clips, toe straps, bike ribbon*	22.5 lbs.
Omega Master 52/42T anodized chainrings	Omega Gran Premio	Shimano N600 SIS	Selle Italia Mundialita, 3T RSR	Omega Nuovo Mondial, Alpina Inox	Shimano N600 silver 24-24T, Shimano silver	Michelin Select 700 x 20C, Ambrosio Elite anodized	Ale toe clips, toe straps, bike ribbon, spoke guard*	22.5 lbs.
Shimano N105 52/42T Biopace	Shimano N105	Shimano N105 SIS	Selle Italia Mundialita, SR CT-P5E	Shimano N105, Asahi stainless	Shimano N105 silver 14-24T, Shimano UG-2	IRC Triathlon 700 x 20C, Ukai 22A anodized	Shimano toe clips, SR straps, celo tape, spoke guard*	22.5 lbs.
Omega Nuovo Competizione 52/42T anodized chainrings	Omega Gran Premio	Suntour Cyclone 7000 w/Alpha-5000 ft. der. IFC Accushift	Selle Italia Mundialita, ITM 201	Omega Nuovo Mondial, Alpina Inox	Regina BX 14-24T Sedisport	Michelin Select 700 x 20C, Ambrosio Elite anodized	Ale toe clips, toe straps, bike ribbon, spoke guard*	22.5 lbs.
Alpha-5000 52/42T anodized chainrings	MKS AR-8 aero	Suntour Alpha-5000 IFC Accushift	Selle Italia Mundialita, SR CT-P5E	Alpha-5000 Asahi stainless	Suntour Alpha-5000 14-28T, DID	700 x 25C skinwall, Araya 20A anodized	SR toe clips, straps, celo tape, spoke guard*	23 lbs.
Sugino VP-110 52/42T	HTI-A1 alloy quill	Shimano 525 SIS	Viscount Nuovo, SP-241 alloy micro-adjust	KK-310 QR F/R, UCP	Shimano 14-28T, Shimano UG	CST C-631 27 x 1 1/8", Weinmann alloy	Toe clips, straps, celo tape, spoke guard*	24 lbs.
Sugino VP-110 52/42T	HTI-A17 alloy	Shimano 532 SIS	Anatomic, SP-241 alloy micro-adjust	KK-310 QR F/R, UCP	Shimano 14-28T, Shimano UG	CST C-631 27 x 1 1/8", Weinmann alloy	Celo tape, spoke guard*	25.5 lbs.
Sugino VP-110 52/40T	HTI-A17 alloy	Shimano Tourney	Anatomic, steel	KK-310 QR ft. KK-106 rear, UCP	Shimano 14-28T KMC	CST C-631 27 x 1 1/8", Weinmann alloy	Foam grips, spoke guard*	26.5 lbs.
SR SXC-T310 48/38/28T	MKS Sylvan rattrap	Suntour Cyclone-7000 barcon controls	Selle Italia Mundialita, SR CT-P5E	Suzue SI-SQ sealed tech, Asahi MTB	Suntour silver 14-28T, DID Lanner	Panaracer Ridgeline-2 700 x 35C, Araya SS-45	SR toe clips, straps, celo tape, spoke guard*	25 lbs.

12 months. Check limited warranty details with your Bianchi dealer. *These models include CPSC reflector group.

Bianchi USA Inc.
385 Oyster Pt.
Blvd. Unit 6
So. San Francisco
Ca. 94080
415 872-1414

^{*}
MB87 BIANCHI USA INC.